



**9-23 September 1974**

**bulletin 18**

There are connoisseurs of wine, connoisseurs of beer, connoisseurs of tea and, connoisseurs of coffee. As from 0945 hours on Monday, 9 September local experts in the art of tasting will be able to sample (and no doubt criticize), the product offered in the latest facility to be provided in the Laboratory which is the new coffee lounge on the first floor of Building R1.

Those readers who are not connoisseurs of coffee may be interested in a few facts about coffee and how it is produced, that is the pure coffee and not the 'instant' variety. Although there are 25 or more species of the genus *Coffea*, only two are normally grown commercially and these are *C. arabica* which produces the best flavour also lighter in colour, and *C. robusta*, generally regarded as inferior but used in blends to give colour. Both species are grown in literally dozens of countries but the basic beans are mainly bought from Colombia, Santos (Brazil) Guyana, Jamaica (the well known Blue Mountain) Kenya and other parts of Africa.

The shrubs and trees are grown at altitudes up to 6000 ft, the best quality beans generally coming from the high altitude plantations. Many factors effect the bean quality 2 of which are produced in each cherry (yes, coffee trees produce fruit called cherries) - the species, altitude, climatic conditions (the amount of sun and rain), and to a certain extent, soil conditions, also the position of the fruit, the best being obtained from the top of the tree.

Having harvested the fruit, and this is done in stages, according to ripening, the beans are removed and are subjected to various processes such as washing, drying, removal of skins and then careful selection. The next process is the roasting of the green bean which produces the flavour, aroma and colour and it is at this stage that great skill is required in using the correct roast for a particular type and size of bean.

The various characteristics, and the growers and buyers refer to these in terms such as hardness or softness, washed or unwashed, high grown, naturals etc. are used to produce the various blends. Blending in fact is more than a skill, it is an art and as coffee can only be evaluated by the senses of taste and smell. Just a few more facts; Viennese coffee is a blend, using pure ground coffee mixed with a part of dried, roasted and ground flg which just adds a little colour and, a little sweetness and French coffee where chicory, again dried, roasted, and ground is added just to give colour.

The coffee on sale in the new coffee lounge will be 'espresso', made in an Italian 'Faema' machine, a type widely used all over Europe. Each cup will be made by a process which forces a small quantity of nearly boiling hot water through 6 grams of ground coffee producing less than half a small coffee cup of concentrated liquid. By requesting the strength required this concentrate is varied by dilution to suit the customer, the settings on the machine from 1 to 5 producing, on 1, the really thick 'espresso' which uses the minimum amount of water, up to setting 5, where increasing amounts of water dilutes the concentrate to produce at 5, a large cup of Coffee. The price per cup, small or large, is 6p and hot or cold milk can be added to taste.

This new facility is available to all members of the Laboratory and of course visitors, although here one has to use a little officialise and state 'subject to normal supervisory control which is vested in line management' and if that is too much to swallow, let's put it another way, you should ask your boss if you can go and buy some coffee. Perhaps it is appropriate to repeat that it is a coffee lounge full stop, and not a sandwich bar.

The new facility, similar to that provided at CERN, is to enable Lab people to meet for discussions on work with other members of staff or visitors over a cup of coffee (and away from the telephone). Yes, there is one last question to answer. What blend will be used. Initially it will be a Marchi di Garanzia and later a Moko Ris and depending on the reactions of the users, one or the other will be standardised.

Don't forget, opening Monday 9 September with service from 0945 to 1130 hours and from 1230 to 1615 hours - Cheers.

We deeply regret to announce the death of Mr W H Fielding on Saturday, 24 August after a very short illness. He was aged 61. Bill Fielding, an S.O in the Resin Lab joined the Laboratory in November 1961, having worked on resins for CIBA for a number of years. During the last war Bill was a diver in the Royal Navy. Although a very quiet man he was an extremely hard worker and anyone with problems associated with resins automatically went to Bill. He will be greatly missed by his many friends both here and at CIBA. We extend our deepest sympathy to his wife and son.

Many old friends will be saddened to hear of the death of Nick Carter on 27 August. Nick retired from the Laboratory in 1967.

## INTERNAL EVENTS

### SUMMER SCHOOL

The Experimentalists Summer School will run from 9-27 September, on a 4 days on 1 day off basis. During each 4 day period the Lecture Theatre will be occupied from 0930 hours to 1730 hours.

### PROPOSAL TALKS

Monday 9 September  
1430  
Conference Room, Building R12

The time of starting is approx.  
as these talks will be  
preceded by the Nimrod Ops  
11 Meeting.

Proposal No. 157: "A Proposal to Search for the Elastic Dipole Moment of the Neutron using Bottled Neutrons". Sussex Univ/Harvard/Munich/Oxford/Grenoble.  
*Talk by Professor K Smith/Sussex.*

Proposal No. 158: "A Proposal to Study Rare Meson System Produced in  $K^{\pm}$  Collisions at 18 and 32 GeV/c using the R.F Separated Beam and the Omega Spectrometer at the SPS". Birmingham University.  
*Talk by Dr J D Dowell/Birmingham.*

### HEP SEMINAR

Wednesday 18 September  
1100  
Lecture Theatre

High Energy Processes with Nuclear Targets.

*J Formanek/Charles University and RL.*

## NIMROD SCHEDULE

CYCLE 8 10.9.74 - 1.10.74

MACHINE PHYSICS

HIGH ENERGY PHYSICS

<u>Team</u>	<u>Beam</u>	<u>Experiment</u>	<u>State</u>
CERN/ORSAY/OXFORD	P81	Hadron-Proton Spin	Date
RUTHERFORD LABORATORY	$\pi 11$	Beam Measurements	Tests & Data
IMPERIAL COLLEGE/RL	$\pi 8A$	Experiments on Narrow Bosons $X^0$ (958) $S^*$ and Cross-Section Measurements	Data
BEAM DETECTOR GROUP	K15A	Parasitic Running	Tests
COUNTER GROUP B/ CAMBRIDGE UNIVERSITY	$\pi 12$	$\pi^- p \rightarrow K^0 \Lambda^0$ in the Range 1.4 - 2.0 GeV/c	Setting up
RUTHERFORD LABORATORY	$\pi 9$	Polarisation in the $\pi^- p \rightarrow \pi^0 n, nn$	Data
BIRMINGHAM/SURREY/RL	K17	Stopping Kaons	Data
RCVD GROUP	P71		Tests

RUTHERFORD LABORATORY BULLETIN

Published by the Scientific Administration Group

Editor: H F NORRIS

Deadline  
for  
Insertions

GENERAL & SOCIAL NEWS  
Tuesday 1600

INTERNAL & EXTERNAL EVENTS  
Wednesday 1200

Room 42 Building R20  
Rutherford Laboratory  
Chilton Didcot Berks  
Abingdon 1900 Ext 484

#### CHESS, SPARK CHAMBERS AND A CARNIVAL

It is a good time to mention a few items which are connected, remote as this may appear from the title.

We would like to congratulate Peter Kent of the Atlas Lab and John Birmingham of AERE, who were the authors of MASTER, the program entered in the first World Computer Chess Championship held recently in Stockholm, by achieving 5th place out of 13. The eventual winner was the Russian program KAISSA. MASTER, taken from Minimax AlgorithmS TEster was designed jointly by the Atlas Lab and Harwell and run on the Rutherford Lab's IBM 360/195, truly a good example of co-operation. MASTER was given 5th place on a tie break, i.e. it had won quicker and lost more slowly than all other programs with 4 points. There is a serious side to computer chess which has nothing to do with chess as such and perhaps someone would like to submit a short article on this for the Bulletin, any offers?

The Rutherford Lab demonstrated the chess program at the Westfield College Carnival of Science held recently at which some 2000 people attended. The program played four members of the Hampstead Chess Club, it won 1, drew 1 and lost 2. Martin Blaine, an expert player (rating 2100+), was impressed by its play, particularly with the speed of response, averaging about 30 seconds per move.

On loan from the R.L. was a spark chamber, arranged to let people see the tracks of cosmic rays which had passed through their bodies. Many other exhibits from Westfield demonstrated physics in a way which would be interesting to people without a scientific background. It is reported that a good time was had by all and that the 'Carnival' was reported on by the BBC last Sunday in the 'World at One' programme.

#### LOST RAINCOAT

Will the owner of a pale-grey DHOB1 raincoat (who mistakenly took another coat from the restaurant cloakroom) please contact Mr J E Hailstone on extension 6103, to effect an exchange.

#### MISSING EQUIPMENT

The following item of equipment has been reported missing from Building R36:-

Muirhead Voltage Divider, Loan Pool Ref, L.P 1511

Would anyone with information on the present whereabouts of this item please contact R Downs, Building R36, Ext 6656.

#### FILM BADGE NOTICE

Period 10 commences Monday, 9 September. Colour Strip - GREEN for Bx films and neutron packs. Please change dosimeters promptly and return all old ones.

*make sure you are wearing the correct dosimeter & all old have been returned*  
As there are no small printed envelopes available for return of films by post, please return dosimeters in an ordinary envelope addressed to Film Service, R2, or place in the box beneath the film boards.

Six monthly TLD's for people with surnames commencing K L M N.

Any enquiries regarding film issues, phone Mrs J A Coates on Ext 430.

#### PART TIME TEMPORARY COOK REQUIRED

The Cosener's House, Abingdon need immediately a temporary cook to provide evening dinner Monday to Friday and lunch either Saturday or Sunday. Hours by arrangement but 1.30 pm to 6.30 pm weekdays and 9.30 am to 3.30 pm on Saturday or Sunday are suggested. There are two kitchen helpers. Payment is 64p per hour plus productivity and threshold agreements. Further details from Mr A G Taylor, Ext 560 or Miss S Gale-Sewell, Coseners House, Abingdon 626.

#### OVERSEAS VISITS

Mr M R Pennington, to CERN, 5-23 September, for discussions with members of theory group.

Mr J E Sissons, to CERN, 6-15 September, on administrative business concerning RL equipment.

Dr D B Thomas, to CEN SA CLAY, 10-11 September, concerning GESSS collaboration with CERN.

Dr L C W Hobbs, to ILL Grenoble, 10-12 September, for discussions with Senior Management and others.

Dr D F R Mildner, to ILL Grenoble, 12-23 September, to perform approved experiment.

Dr P R Williams, to the USA, 14 September - 5 October, to study High Power Laser Installations.

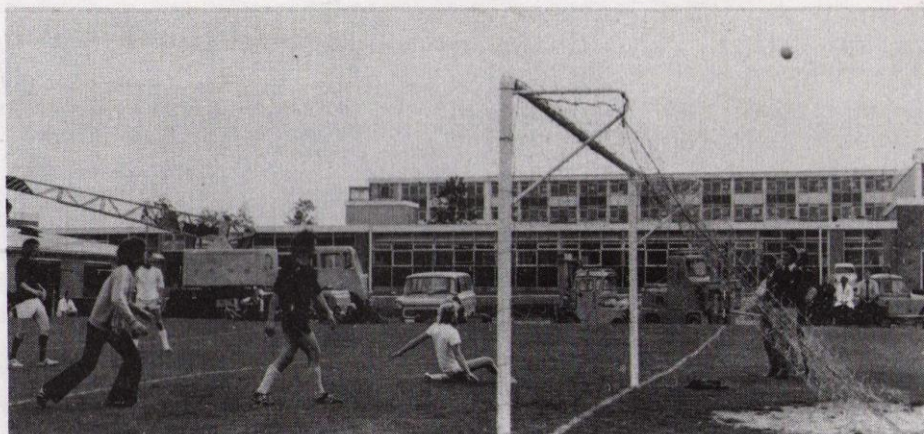
Dr J J Thresher, to the USSR, 15-27 September, to give lectures and hold discussions.

Dr D C Larbalestier and Dr C A Scott, to the USA, 21 September - 4 October, to attend and give talks at Conference on Applied Superconductivity at Chicago and to visit a number of research laboratories.

# SOCIAL NEWS

## SOCCER

'the one that got away'



We start the season with an action photo, reports from 2 matches, fixtures and results.

A hat trick from Dave Mathews, plus singles from Peter Cutler and Phill Lewis gave R25 victory over Transport in the opening B Division game on Wednesday 28 August, by 5-2.

Transports chances were slim indeed when it was realised that only five players were available at the start.

The game was just 30 seconds old when Mathews hit the back of Transports net with the first of his sides five goals and by the time the other members of the M.T. team were on the field R25 held a comfortable lead.

Midway through the half, a long throw in by Darrel Taylor found Eddie Smith unmarked by the far post, the mid-field man coolly heading the ball home to pull one back. Later John Cannon got a second for Transport just before half-time, the leeway however proved too much and R25 finished comfortable winners with two goals to spare.

Thursdays Div. A game between C and A and R9 turned out to be a real corker, the less fancied workshop side putting on a superb performance to pull off a convincing 6-2 victory.

Two up in the first seven minutes with goals from Jeff Bizzell and John Geddes the game appeared to be going C and A way but in a devastating 6 min spell, R9 completely changed all that. Ron MacKay, who had a splendid game throughout broke through the middle to beat C & A keeper Robert Cooke all the way with a fine low drive, team work resulted in a second soon afterwards. Micky Wise cutting in from the left to place his shot wide off the keeper's reach to put the two

sides on equal terms.

Shortly afterwards the C & A defence seemed to be rooted to the spot when a MacKay, Hewett, Ireson move resulted in the latter putting his side into the lead, prior to the H.T whistle, MacKay scored his second of the match to give R9 a 4-2 interval lead.

On the resumption C and A trying desperately hard to get back into the game, Ron Lawes had a goal bound shot pushed round the post for a cr. by the R9 keeper Mick Smith and later both Geddes and Bizzell had on target shots saved by Smith. Late in the half substitute Tony Hewett had only to beat Cooke to score and with less than two minutes to the end of the game John Crawford completed the scoring.

This was C & A's heaviest defeat to date.

### RESULTS

Tues 3/9	Taylors - 2,	R9 - 2,	Group 1
Wed 4/9	R25 - 3,	Nomads - 1,	Group 2

### FIXTURES

	Group 1	Group 2
Mon 9/9	Atlas v Taylors	
Wed 11/9	Atlas v R9	
Thu 12/9	-	Nomads v Transport
Mon 16/9	R9 v Atlas	-
Tue 17/9	C.A. v Taylors	-
Wed 18/9	-	Nomads v R25
Thu 19/9	Atlas v C.A.	-
Fri 20/9	R9 v Taylors	-

### AERE FILM SOCIETY

The Society's 20th season commences on 17 & 18 September at 7.45 pm in the Cockcroft Hall.

Three themes in particular stand out from this year's programme. The first reflects the growing dissatisfaction in American society with materialism and the American dream as shown in TAKING OFF, THE KING OF MARVIN GARDENS, DIARY OF A MAD HOUSEWIFE and HAROLD & MAUDE.

The second includes four films which have given the Censor headaches; namely WOMEN IN LOVE; DOUBLE SUICIDE, originally banned for its explicit treatment; BIRDS COME TO DIE IN PERU, which caused a stir when first shown, and LINDSAY KEMP's CIRCUS which touches a subject not usually dealt with on film.

The third theme, Science Fiction, the topic for Film Soc II this year, is also reflected in the main programme by the two films JE T'AIME, JE T'AIME, concerning a time traveller, and WEEKEND, set in post-nuclear France. Also included are three shorter 'classics': PAGE OF MADNESS (1926) which startled visitors to the NFT Viewing Sessions with its cinematic technique including flashbacks and multiple images; JUNE PARTIE DE CAMPAGNE (1937) Renoir's famous film of

French country life; and MESHES OF THE AFTERNOON (1943) - the forerunner of underground movies.

Despite inflation membership is still only £1.00 for the season so if your interest has been kindled contact Mrs J Homer in the Library, extn 6163.

### CHRISTIAN FELLOWSHIP

13 September - All are welcome to a time of fellowship at 1230 pm in the R12 Conference Room.

20 September - In different markets we may have seen stalls which sell Christian books and literature. The person who runs one in Swindon will be visiting the Laboratory and all are welcome to come along to hear of his work. The venue is the R12 Conference Room and the time 1230 pm.

### CHESS TOURNAMENT

The Chess Tournament is due to start on 7 October. All people wishing to enter this winter's tournament should submit their names, not later than 30 September, to Mr P C Craske, Building R2, Ext. 232.